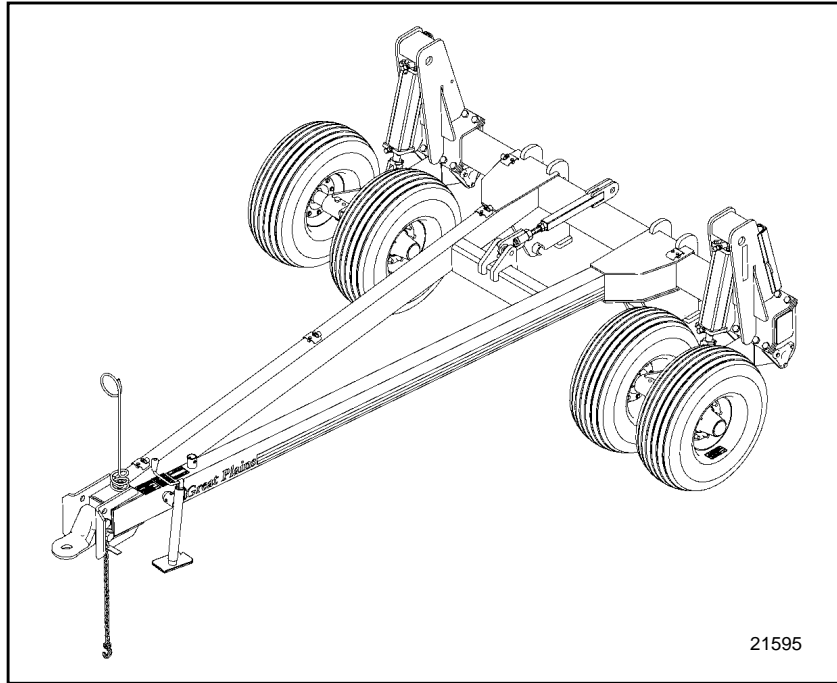


Parts Manual

Implement Hitch



Read the operator's manual entirely. When you see this symbol, the subsequent instructions and warnings are serious - follow without exception. Your life and the lives of others depend on it!



21595

Cover illustration may show optional equipment not supplied with standard unit.



Table of Contents

Section 1 Introduction	1-1
General Information	1-1
Using This Manual	1-1
Manual Replacement Information	1-1
Manual Revisions	1-1
Touch-up Paint	1-1
Hardware Legend	1-2
Replacement Hardware	1-2
Serial Numbers	1-2
Part Number Service Coding	1-2
Part Number Index	1-3
Section 2 Frame	2-1
Tongue	2-1
Frame	2-3
Section 3 Transport	3-1
Transport	3-1
Spindle And Tire	3-3
Section 4 Hydraulics	4-1
Hydraulics	4-1
Hydraulic Cylinder (810-496C 5x16x1.5 Rod)	4-3
Hydraulic Cylinder (810-497C 4.75x16x1.5 Rod)	4-5
Section 5 Decals	5-1
Decals	5-1
Section 6 Fertilizer (Option)	6-1
Fertilizer Tank & Mount	6-1

© Copyright 2003 All rights Reserved

Great Plains Manufacturing, Inc. provides this publication "as is" without warranty of any kind, either expressed or implied. While every precaution has been taken in the preparation of this manual, Great Plains Manufacturing, Inc. assumes no responsibility for errors or omissions. Neither is any liability assumed for damages resulting from the use of the information contained herein. Great Plains Manufacturing, Inc. reserves the right to revise and improve its products as it sees fit. This publication describes the state of this product at the time of its publication, and may not reflect the product in the future.

Great Plains Manufacturing, Incorporated Trademarks

The following are trademarks of Great Plains Mfg., Inc.: Application Systems, Ausherman, Land Pride, Great Plains

All other brands and product names are trademarks or registered trademarks of their respective holders.

Printed in the United States of America.



Alphabetical Page Index

D

Decals5-1

F

Fertilizer Tank & Mount6-1

Frame2-3

H

Hydraulic Cylinder (810-496C 5x16x1.5 Rod)4-3

Hydraulic Cylinder (810-497C 4.75x16x1.5 Rod)4-5

Hydraulics4-1

S

Spindle And Tire3-3

T

Tongue2-1

Transport3-1



General Information

Using This Manual

This manual is divided into sections. The first section contains General Information, a Table of Contents, an Alphabetical Page Index, and a Part Number Index. The remaining sections divide the machine into segments (i.e. Frames, Drives, Hydraulics, etc.) which illustrate and list all parts.

The Great Plains parts in this manual are specially designed for this machine and should be replaced with Great Plains parts only.

The information in this manual is current at printing. Some parts may change to assure top performance.

Right-hand and left-hand as used in this manual are determined by facing the direction the machine will travel while in use.

Below is an example of two facing pages from a parts manual. Familiarize yourself with the contents of these pages.

Manual Replacement Information

Replacement manuals are available. Refer to your dealer or the Great Plains Publications Catalog for additional information.

Manual Revisions

When this manual is revised, the modification date is printed on the front cover and on the revised page(s).

Touch-up Paint

Repaint parts where paint is worn or scratched to prevent rust. Aerosol touch-up paint is available. To order use Great Plains parts numbers below:

- GP Green 821-001C
- GP Black 821-002C
- GP Beige 821-003C
- GP Buckskin 821-004C

The diagram shows two facing pages from a parts manual. The left page is an illustration page for 'Tongue & Pull Bar (S/N 00000-)'. It includes a page number '2-1', manual name 'CF500 and CF600', and a serial number break. The illustration is labeled with numbers 1 through 24. The right page is a parts list for 'Tongue & Pull Bar (S/N 00000-)'. It includes a page number '2-2', section name 'Frames', and a section number '2'. The parts list contains 24 items with their respective part numbers and descriptions. Labels with arrows point to various elements on both pages, including 'Page Number', 'Manual Name', 'Serial Number Break', 'Illustration Page', 'Parts Page', 'Section Name', 'Section Number', 'Illustration Heading', 'Illustration', 'Illustration Number', 'Manual Number', and 'New or Modification Date'.

Hardware Legend

AR	As Required
BLADE	Blade Bolt
C	Cap Screw
CP	Cotter Pin
CPHSSS	Cup Point Hex Socket Set Screw
CPSHSS	Cup Point Square Head Set Screw
CPSQHSS	Cup Point Square Head Set Screw
CRFCHMS	Cross Recess Flat Countersunk Head Mach. Screw
CRPHMS	Cross Recess Pan Head Machine Screw
CRPHTFS	Cross Recess Pan Head Thread Forming
CRRHMS	Cross Recess Round Head Machine Screw
CRTHMS	Cross Recess Truss Head Machine Screw
CSNB	Countersunk Square Neck Bolt
FHMS	Flat Head Machine Screw
FTC	Full Thread Cap Screw
H	Hex Nut
HCLN	Hex Center Lock Nut
HFLCS	Hex Flange Lock Cap Screw
HFS	Hex Flange Screw
HFSLN	Hex Flange Serrated Lock Nut
HFSS	Hex Flange Serrated Screw
HHCS	Hex Head Cap Screw or Metric Bolt
HSBHCS	Hex Socket Button Head Cap Screw
HSFCHCS	Hex Socket Flat Countersunk Head Cap Screw
HSHCS	Hex Socket Head Cap Screw
HSSS	Hex Socket Head Screw
HTLN	Hex Top Lock Nut
HWHCS	Hex Washer Head Cap Screw

HWHMS	Hex Washer Head Machine Screw
HXBHCS	Hex Socket Button Head Cap Screw
J	Hex Jam Nut
JIC	37 Degree Tapered Thread
L	Helical Spring Lock Washer
LUG	Lug Bolt
NFC	National Fine Cap Screw
NPSM	National Pipe Straight Mechanical
NPTF	National Pipe Taper Fuel
P	Wide Plain Washer
PHMS	Pan Head Machine Screw
PLOW	Plow Bolt
RHMS	Round Head Machine Screw
RHSNB	Round Head Square Neck Bolt
SCREW LEVELING	Leveling Screw
SCREW THUMB	Thumb Screw
SCREW WELD	Weld Screw
SFCHMS	Slotted Flat Countersunk Head Machine Screw
SFHMS	Slotted Fillister Head Machine Screw
SP	Special
SP SCREW	Special Screw
SQHSS	Square Head Set Screw
SRHMS	Slotted Round Head Machine Screw
SSS	Socket Set Screw
STCS	Self Tapping Cap Screw
STHMS	Slotted Truss Head Machine Screw
WHEEL	Wheel Studs and Hub Long Bolts
WING	Wing Bolt

Replacement Hardware

The **Hardware Legend** above lists hardware abbreviations used in the parts lists. All bolts and nuts are grade 5 unless otherwise noted. The use of improper grades of hardware can result in personal injury, damage to equipment, or loss of property.

Serial Numbers

Always use the serial and model number when ordering parts. Refer to the operator's manual for serial number plate location.

(S/N 20001+ or S/N 20001 and above) Includes serial numbers 20001 and above (to the latest number)

(S/N 10001↔20000) Includes serial numbers between 10000 and 20001

(S/N 10000- or S/N 10000 and below) Includes serial numbers 10000 and below (to the earliest number)

Part Number Service Coding

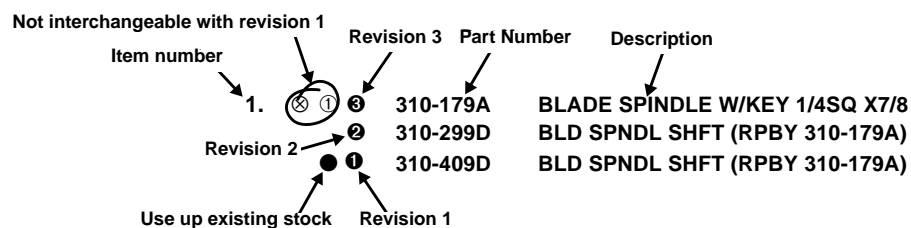
Within the parts lists some part numbers are coded for revisions and interchangeability.

Bold face type indicates parts that have been revised. These parts are considered interchangeable unless otherwise noted.

Service Code Legend:

- ① First revision, e.g.; ② is 2nd revision, ③ is 3rd revision, etc.
(Greater numbers are the newest.)
- Use existing stock of this part before ordering the revision.
- ⊗ Not interchangeable
- ⊗①② Revision 2 is not interchangeable w/1

The sample below shows how these codes are used.



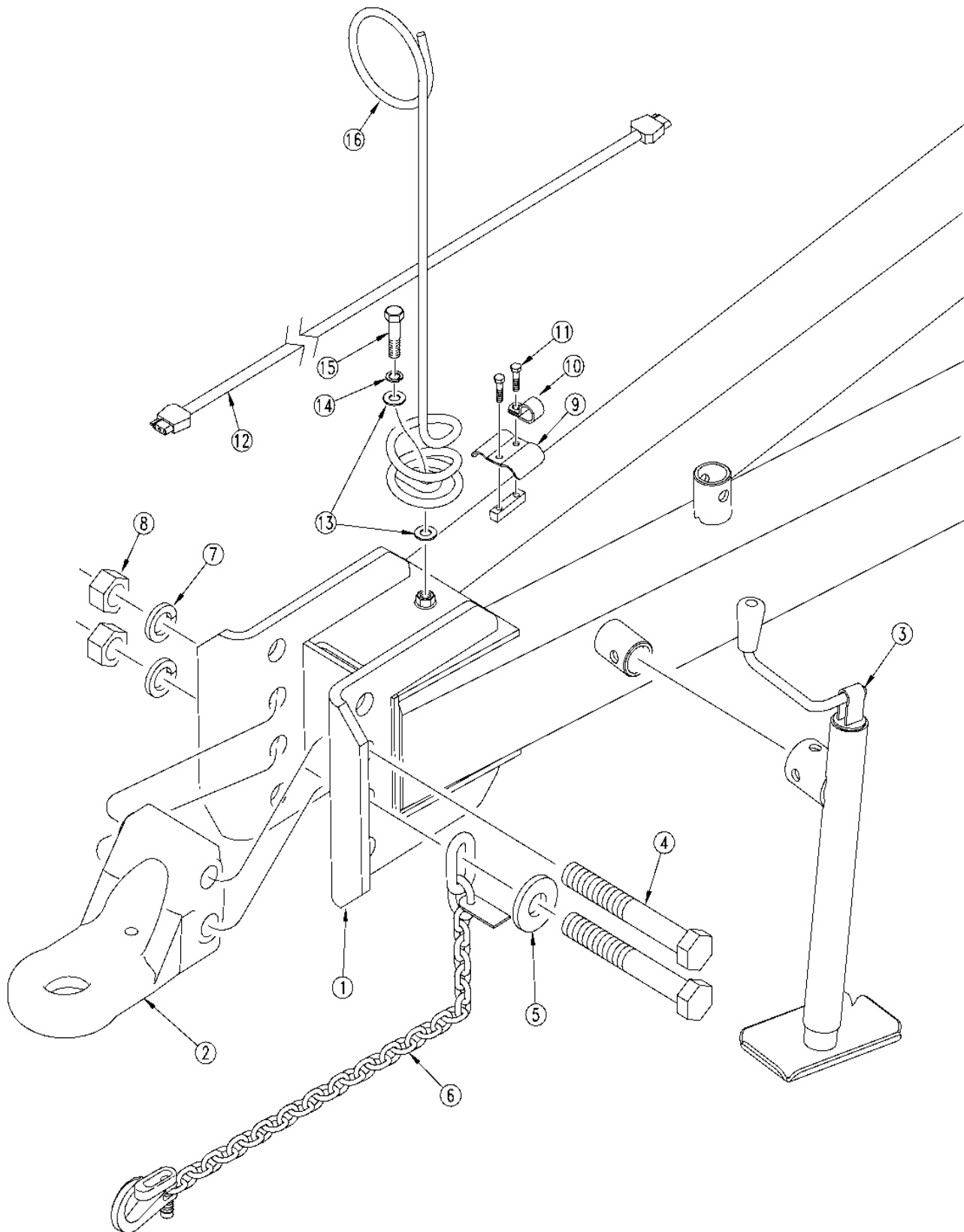
Part Number Index

<u>Part Number</u>	<u>Page</u>	<u>Part Number</u>	<u>Page</u>	<u>Part Number</u>	<u>Page</u>	<u>Part Number</u>	<u>Page</u>
120-223D	3-2	803-014C	2-4	838-265C	5-2		
148-050H	3-2	803-020C	3-2	838-266C	5-2		
148-051V	3-2	803-021C	6-2	838-267C	5-2		
148-085H	3-2	803-026C	3-2	890-011C	3-2		
181-064D	3-4	803-026C	3-4	890-032C	3-4		
194-070D	2-2	803-029C	3-4	890-183C	2-2		
196-289H	3-2	803-031C	3-2	890-245C	2-2		
1M7028	4-4	803-034C	2-2	890-600C	2-2		
1M7028	4-6	803-034C	3-2	890-620C	4-4		
200-006D	3-4	803-049C	3-2	890-620C	4-6		
2A0012	4-4	803-147C	6-2				
2A0012	4-6	803-219C	3-4				
2A0019	4-4	804-009C	2-4				
2A0019	4-6	804-013C	2-4				
2A0025	4-4	804-015C	2-2				
2A0025	4-6	804-015C	3-2				
2A0132	4-4	804-017C	2-2				
2A0132	4-6	804-022C	6-2				
2A0215	4-4	804-027C	3-2				
2A0215	4-6	804-030C	2-2				
2A0218	4-4	804-037C	3-2				
2A0218	4-6	804-095C	6-2				
2S8522	4-4	805-016C	3-4				
2S8522	4-6	805-032C	2-4				
3R8512	4-6	805-152C	3-2				
3R9512	4-4	805-167C	2-4				
4R8108	4-6	805-263C	2-4				
4R9108	4-4	805-313C	2-4				
502-068D	2-2	806-015C	6-2				
502-068D	2-4	807-073C	2-2				
599-003H	3-2	810-160C	4-6				
599-004H	3-2	810-496C	3-2				
599-005H	3-2	810-496C	4-2				
599-005H	3-4	810-497C	3-2				
599-006H	2-4	810-497C	4-2				
599-007H	2-2	810-507C	4-4				
599-007H	2-4	811-060C	4-2				
599-010H	6-2	811-063C	4-2				
599-011H	6-2	811-859C	4-2				
599-029D	2-4	811-860C	4-2				
599-035D	2-4	814-223C	3-4				
5R8124	4-6	814-255C	3-4				
5R9124	4-4	814-256C	3-4				
6R8171	4-6	815-099C	3-4				
6R9171	4-4	815-101C	3-4				
7M8324	4-4	815-103C	3-2				
7M8324	4-6	815-103C	3-4				
800-001C	3-2	816-019C	3-4				
800-001C	3-4	816-035C	3-4				
800-064C	2-2	817-159C	6-2				
800-064C	2-4	817-348C	4-2				
800-301C	4-2	817-546C	6-2				
802-007C	2-2	818-019C	5-2				
802-007C	2-4	818-323C	6-2				
802-023C	4-4	818-339C	5-2				
802-023C	4-6	818-557C	5-2				
802-053C	6-2	822-036C	3-4				
802-069C	3-2	822-037C	3-4				
802-069C	3-4	822-038C	3-4				
802-073C	3-2	822-039C	3-4				
802-079C	2-4	829-013C	6-2				
802-103C	3-2	829-048C	6-2				
802-128C	3-2	830-045C	6-2				
802-182C	3-4	830-052C	6-2				
802-216C	2-4	830-135C	6-2				
802-258C	2-2	838-160C	5-2				
802-412C	6-2	838-161C	5-2				
802-544C	2-2	838-259C	5-2				

Part Number Index

<u>Part Number</u>	<u>Page</u>	<u>Part Number</u>	<u>Page</u>	<u>Part Number</u>	<u>Page</u>	<u>Part Number</u>	<u>Page</u>
--------------------	-------------	--------------------	-------------	--------------------	-------------	--------------------	-------------

Tongue



21590

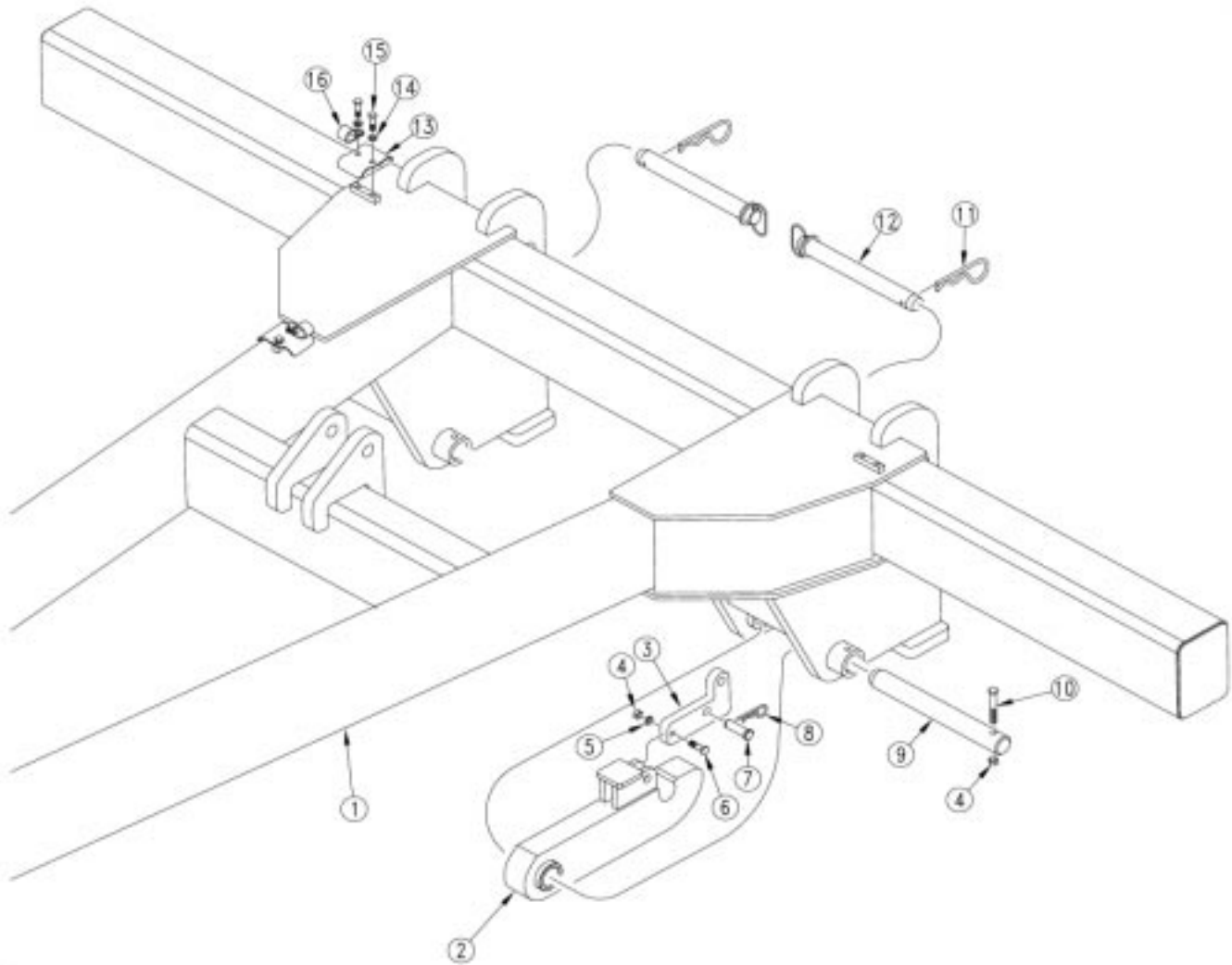
Tongue

2

Ref.	Part No.	Part Description	Comments
1.	599-007H	HITCH MAIN FRAME WLMT	
2.	170-201D	CASTING LARGE HITCH STRAP	
3.	890-245C	SCREW JACK 2000# 15-30 TOP WND	
4.	802-544C	HHCS 1 1/4-7X9 GR5 SPTH	
5.	194-070D	SAFETY CHAIN WASHER	
6.	890-183C	SAFETY CHAIN 20000 LB	
7.	804-030C	WASHER LOCK 1 1/4 SPRING PLT	
8.	803-034C	NUT HEX 1 1/4-7 PLT	
9.	502-068D	HYD HOSE CLAMP BRACKET	
10.	800-064C	HOSE CLIP 13/16 ID	
11.	802-007C	HHCS 5/16-18X3/4 GR5	
12.	890-600C	AG LIGHT HARNESS, EXT-15'	
13.	804-017C	WASHER FLAT 1/2 USS PLT	
14.	804-015C	WASHER LOCK SPRING 1/2 PLT	
15.	802-258C	HHCS 1/2-13X1 GR5	
16.	807-073C	SPRING HOSE LOOP HEAVY	

Legend: ● = 1st revision; ● = 2nd revision; ● = 3rd revision; ● = use up existing stock; ⊗ = not interchangeable; ⊗ ① ● = for example: revision 2 is not interchangeable w/revision 1

Frame



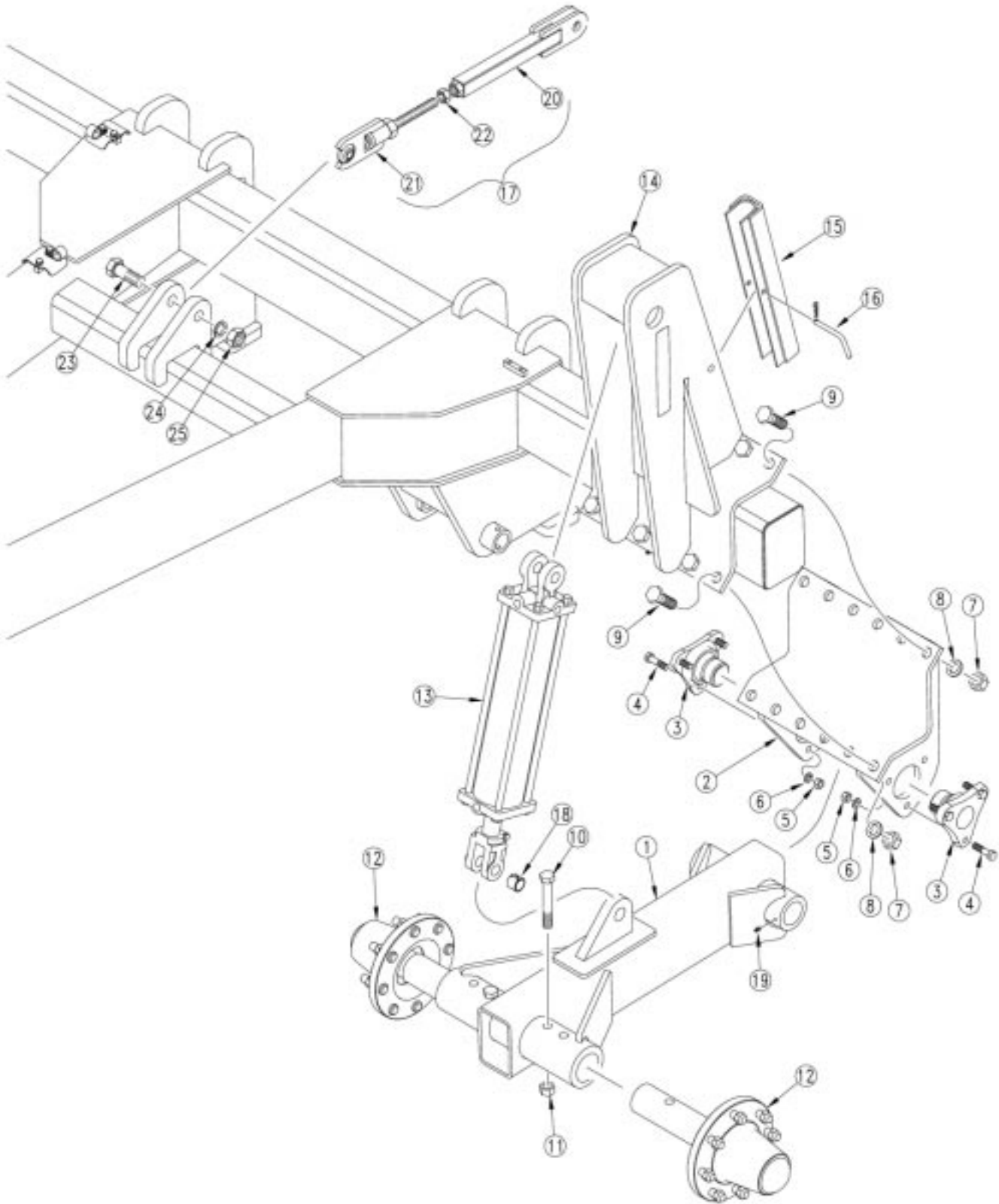
Frame

Ref.	Part No.	Part Description	Comments
1.	599-007H	HITCH MAIN FRAME WLMT	
2.	599-006H	HITCH LOWER LINK ARM WLMT	
3.	599-035D	HITCH LOWER LINK LATCH	
4.	803-014C	NUT HEX 3/8-16 PLT	
5.	804-013C	WASHER LOCK SPRING 3/8 PLT	
6.	802-079C	HHCS 3/8-16X1 1/4 GR5	
7.	805-263C	PIN CLEVIS 5/8 X 2 PLAIN	
8.	805-032C	PIN HAIR COTTER .148 WIRE	
9.	599-029D	HITCH LOWER LINK PIVOT PIN	
10.	802-216C	HHCS 3/8-16X2 3/4 GR5	
11.	805-167C	PIN HAIR COTTER .243 WIRE PLT	
12.	805-313C	PIN HITCH 1 1/4 X 9 1/2 USBL	
13.	502-068D	HYD HOSE CLAMP BRACKET	
14.	804-009C	WASHER LOCK SPRING 5/16 PLT	
15.	802-007C	HHCS 5/16-18X3/4 GR5	
16.	800-064C	HOSE CLIP 13/16 ID	



Legend: ● = 1st revision; ● = 2nd revision; ● = 3rd revision; ● = use up existing stock; ⊗ = not interchangeable; ⊗ ① ● = for example: revision 2 is not interchangeable w/revision 1

Transport



21592

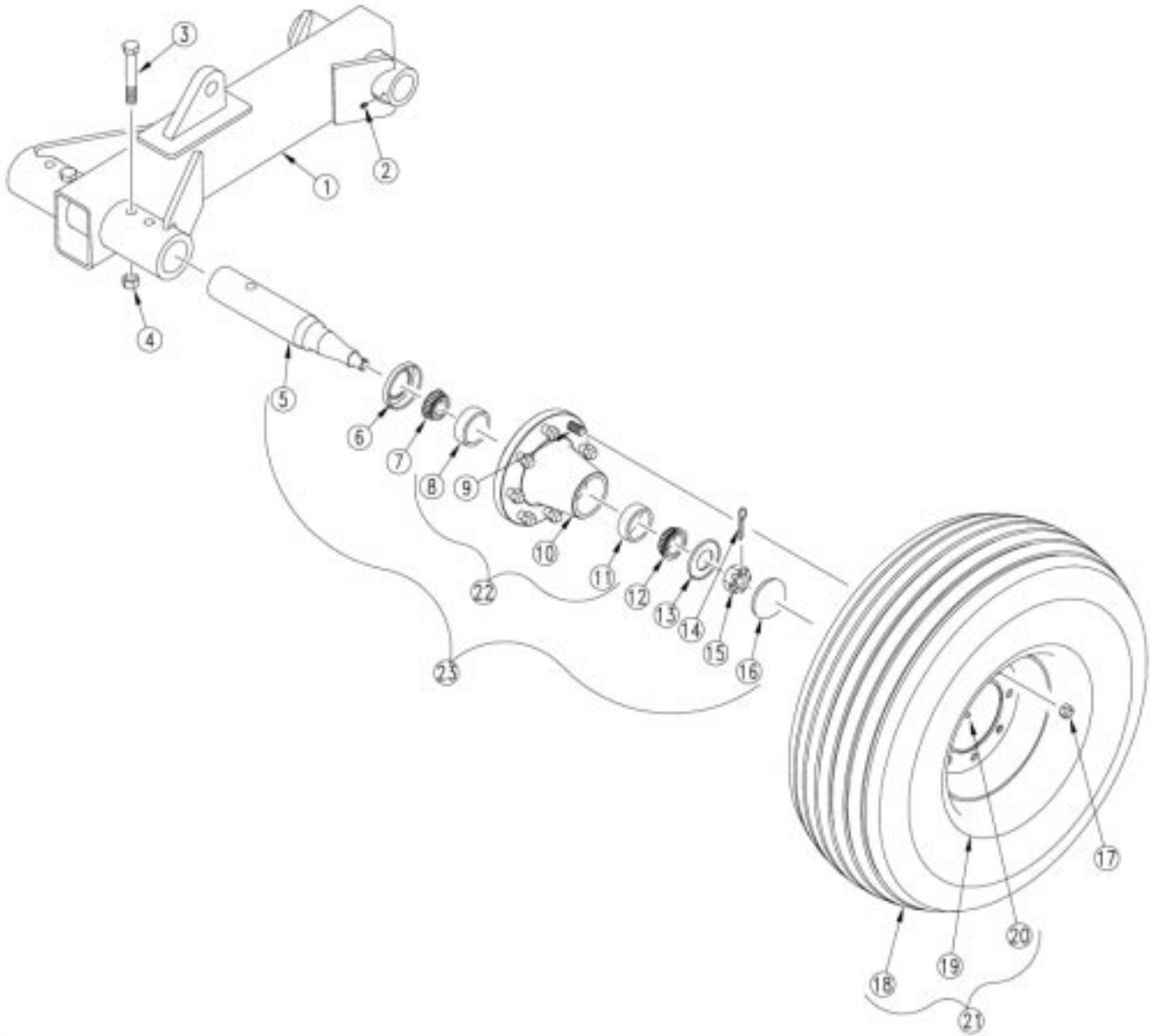
Transport

3

Ref.	Part No.	Part Description	Comments
1.	599-005H	HITCH GAUGE WHEEL WLMT	
2.	599-003H	HITCH LOWER GW MNT WLMT	
3.	120-223D	3 BOLT PIVOT CAST MACHINED	
4.	802-128C	HHCS 1/2-13X2 GR5	
5.	803-020C	NUT HEX 1/2-13 PLT	
6.	804-015C	WASHER LOCK SPRING 1/2 PLT	
7.	803-049C	NUT HEX 7/8-9 PLT	
8.	804-037C	WASHER LOCK SPRING 7/8 PLT	
9.	802-103C	HHCS 7/8-9X2 3/4 GR5	
10.	802-069C	HHCS 3/4-10X5 GR5	
11.	803-026C	NUT LOCK 3/4-10 PLT	
12.	815-103C	HUB & SPINDLE ASY 8 BOLT 5790#	Refer page 3-3 for breakdown
13.	810-496C	CYL REP 5X16X1.5 ROD (TIE)	Refer page 4-3 for breakdown
	810-497C	CYL REP 4.75X16X1.5 ROD (TIE)	Refer page 4-5 for breakdown
14.	599-004H	HITCH UPPER GW MNT WLMT	
15.	196-289H	CYLINDER LOCK CHANNEL 1 1/2X16	
16.	805-152C	BENT PIN 3/8 X 2 1/2 USE W/COT	
17.	148-051V	PULL HITCH TOP LINK TUBE ASSY	
18.	890-011C	BUSHING SPINDLE 1 1/2X1 1/4X1	
19.	800-001C	GREASE ZERK STRAIGHT 1/4-28	
20.	148-050H	PULL HITCH TOP LINK WLMT	
21.	148-085H	LEVEL LINK ADJUSTER	
22.	803-034C	NUT HEX 1 1/4-7 PLT	
23.	802-073C	HHCS 1-8X4 GR5	
24.	804-027C	WASHER LOCK SPRING 1 PLT	
25.	803-031C	NUT HEX 1-8 PLT	

Legend: ● = 1st revision; ● = 2nd revision; ● = 3rd revision; ● = use up existing stock; ⊗ = not interchangeable; ⊗ ① ● = for example: revision 2 is not interchangeable w/revision 1

Spindle And Tire

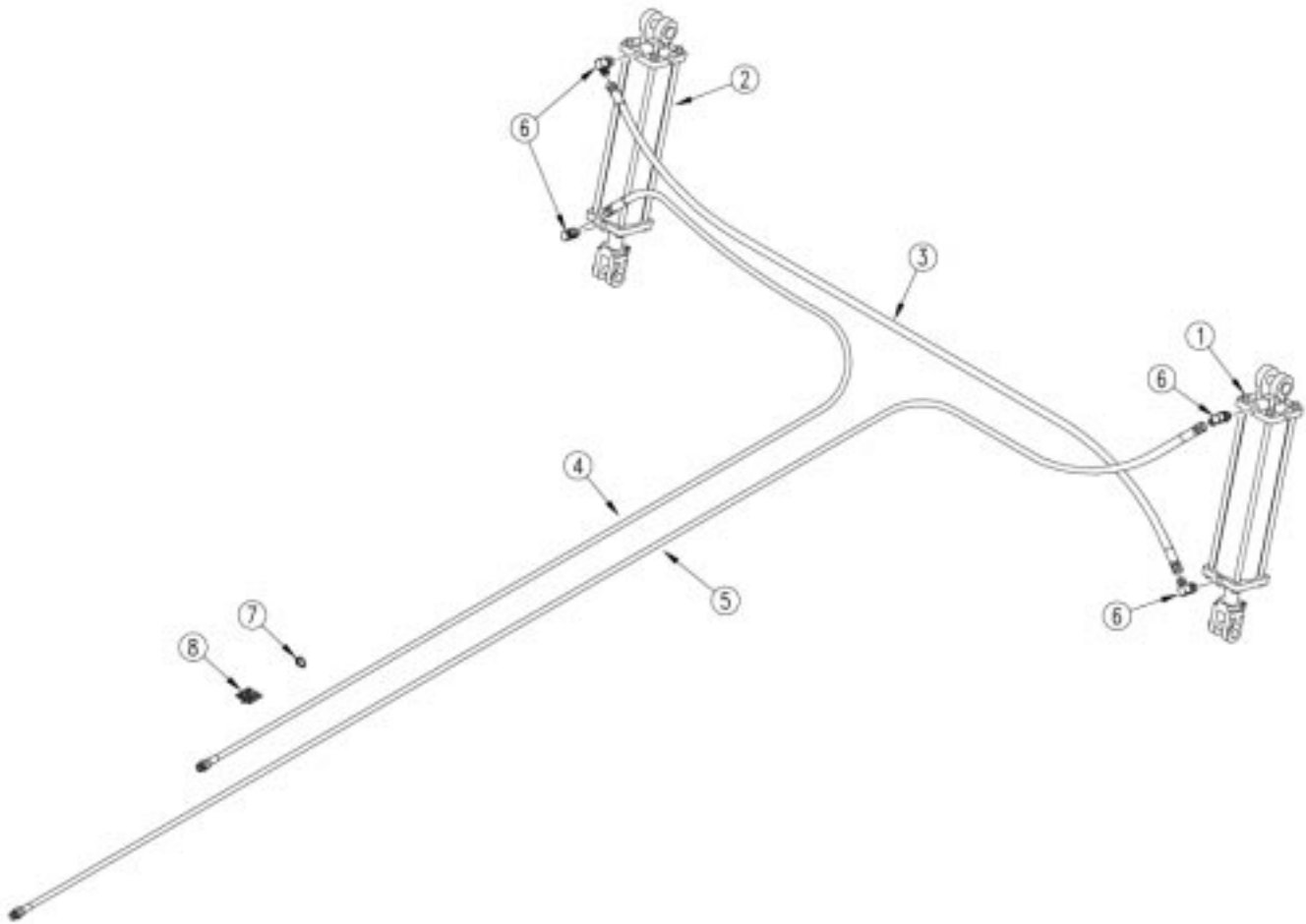


Spindle And Tire

Ref.	Part No.	Part Description	Comments
1.	599-005H	HITCH GAUGE WHEEL WLMT	
2.	800-001C	GREASE ZERK STRAIGHT 1/4-28	
3.	802-069C	HHCS 3/4-10X5 GR5	
4.	803-026C	NUT LOCK 3/4-10 PLT	
5.	815-099C	SPINDLE SGL 2.73X15.97	
6.	816-019C	8-BOLT HUB SEAL	
7.	822-036C	BEARING CONE #3780	
8.	822-037C	BEARING CUP #3720	
9.	802-182C	HUB STUD 5/8-18X2 3/8 GR5	
10.	200-006D	8-BOLT WHEEL HUB MACH.	
11.	822-039C	BEARING CUP #2720	
12.	822-038C	BEARING CONE #2790	
13.	181-064D	7/8 SPINDLE WASHER, HARDENED	
14.	805-016C	PIN COTTER 3/16 X 1 1/4 PLT	
15.	803-029C	NUT HEX SLOTTED 7/8-14 PLT	
16.	890-032C	HUB CAP	
17.	803-219C	NUT LUG 5/8-18 X 90 DEG PLT	
18.	814-255C	TIRE 12.5LX15 LOAD F FIRESTONE	
19.	814-223C	WHEEL 15X10 8 BOLT WHITE	
20.	816-035C	VALVE STEM TR415X.625X1 1/4 LG	
21.	814-256C	TIRE/WHL 12.5LX15 LD F WHT FST	
22.	815-101C	HUB 8 BOLT 5790# W/CUPS&STUDS	
23.	815-103C	HUB & SPINDLE ASY 8 BOLT 5790#	

Legend: ● = 1st revision; ● = 2nd revision; ● = 3rd revision; ● = use up existing stock; ⊗ = not interchangeable; ⊗ ① ● = for example: revision 2 is not interchangeable w/revision 1

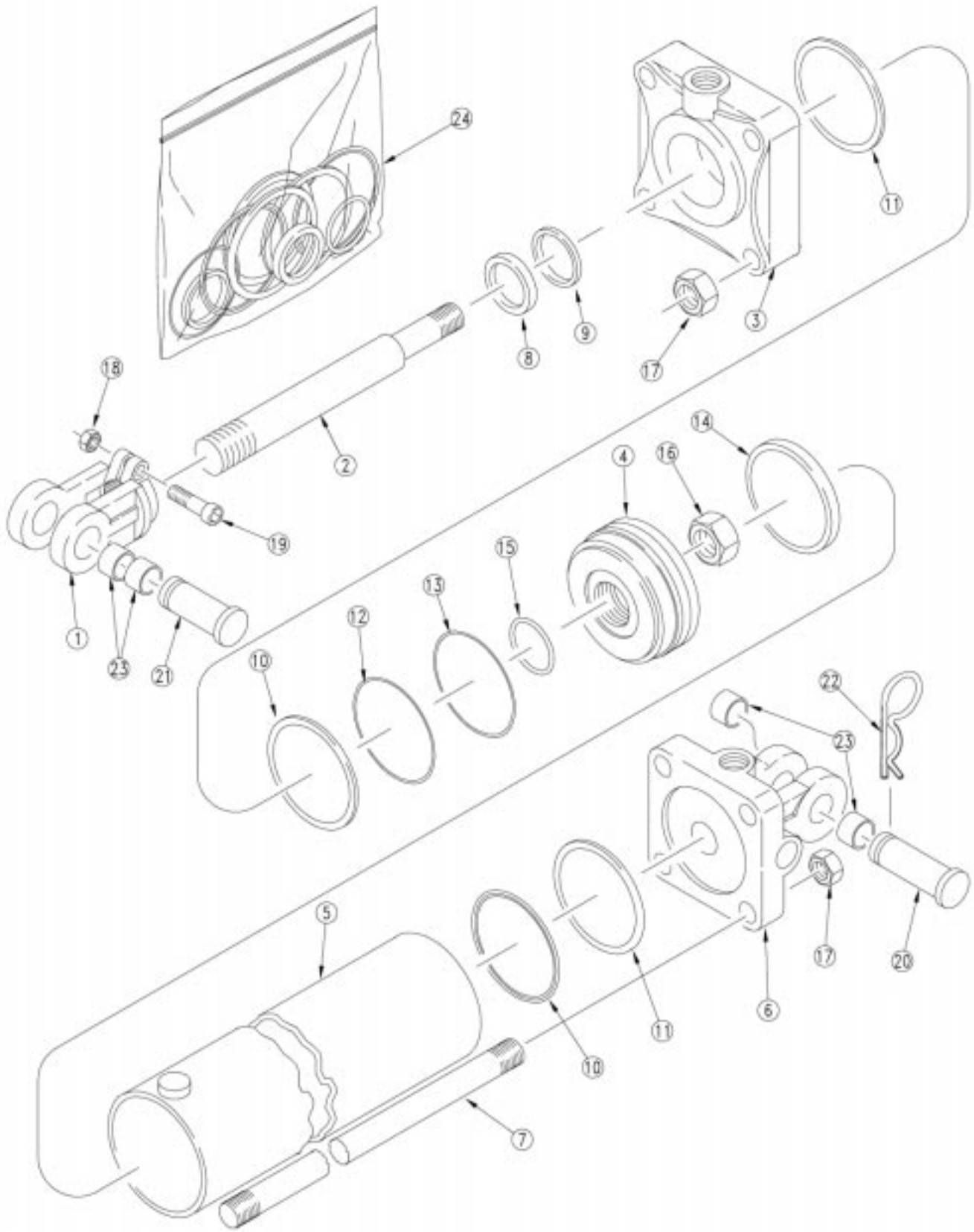
Hydraulics



Hydraulics

Ref.	Part No.	Part Description	Comments
1.	810-496C	CYL REP 5X16X1.5 ROD (TIE)	Refer page 4-3 for breakdown
2.	810-497C	CYL REP 4.75X16X1.5 ROD (TIE)	Refer page 4-5 for breakdown
3.	811-859C	HH1/2R2 114 3/4FJIC	
4.	811-060C	HH1/2R2 272 3/4FJIC 1/2MNPT	
5.	811-860C	HH1/2R2 326 3/4FJIC 1/2MNPT	
6.	811-063C	EL 3/4MJIC 3/4MORB	
7.	800-301C	CABLE TIE 2 DIA MIN - YLW	
8.	817-348C	PLASTIC HOSE LABEL	

Hydraulic Cylinder (810-496C 5x16x1.5 Rod)



20297

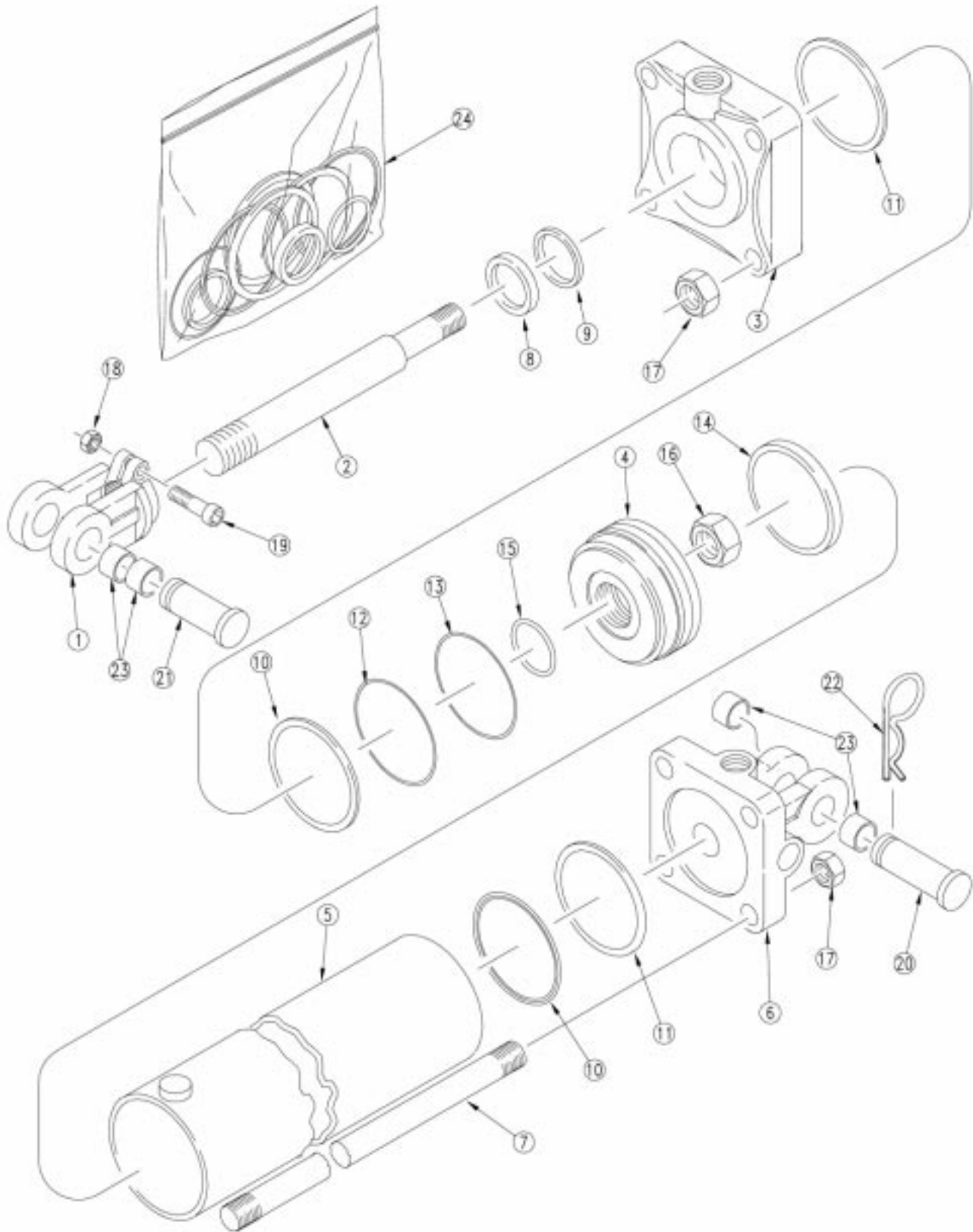
Hydraulic Cylinder (810-496C 5x16x1.5 Rod)

Ref.	Part No.	Part Description	Comments
1.	1M7028	MIDWAY CLEVIS	
2.	2S8522	ROD MIDWAY	
3.	3R9512	MIDWAY HEAD	
4.	4R9108	PISTON MIDWAY	
5.	5R9124	TUBE MIDWAY	
6.	6R9171	BASE MIDWAY	
7.	7M8324	TIE ROD MIDWAY	
8.		MW WIPER	Only available in item 24
9.		U-CUP	Only available in item 24
10.		O-RING	Only available in item 24
11.		MW BACK UP	Only available in item 24
12.		SEAL, TEFLON MIDWAY	Only available in item 24
13.		O-RING LOADER MIDWAY	Only available in item 24
14.		WEAR RING MIDWAY	Only available in item 24
15.		MW O-RING	Only available in item 24
16.	2A0025	MW PISTON NUT	
17.	2A0019	TIE ROD NUT MIDWAY	
18.	2A0012	MW NUT CLEVIS & TIE ROD	
19.	802-023C	HHCS 3/8-16X1 3/4 GR5	
20.	2A0218	CLEVIS PIN MIDWAY	
21.	2A0215	CLEVIS PIN MIDWAY	
22.	2A0132	MW PIN CLIP	
23.	890-620C	BUSHING,1 1/2X1 1/4X3/4LG	
24.	810-507C	SEAL KIT MW (4A9104)	

4

Legend: ● = 1st revision; ● = 2nd revision; ● = 3rd revision; ● = use up existing stock; ⊗ = not interchangeable; ⊗ ① ● = for example: revision 2 is not interchangeable w/revision 1

Hydraulic Cylinder (810-497C 4.75x16x1.5 Rod)



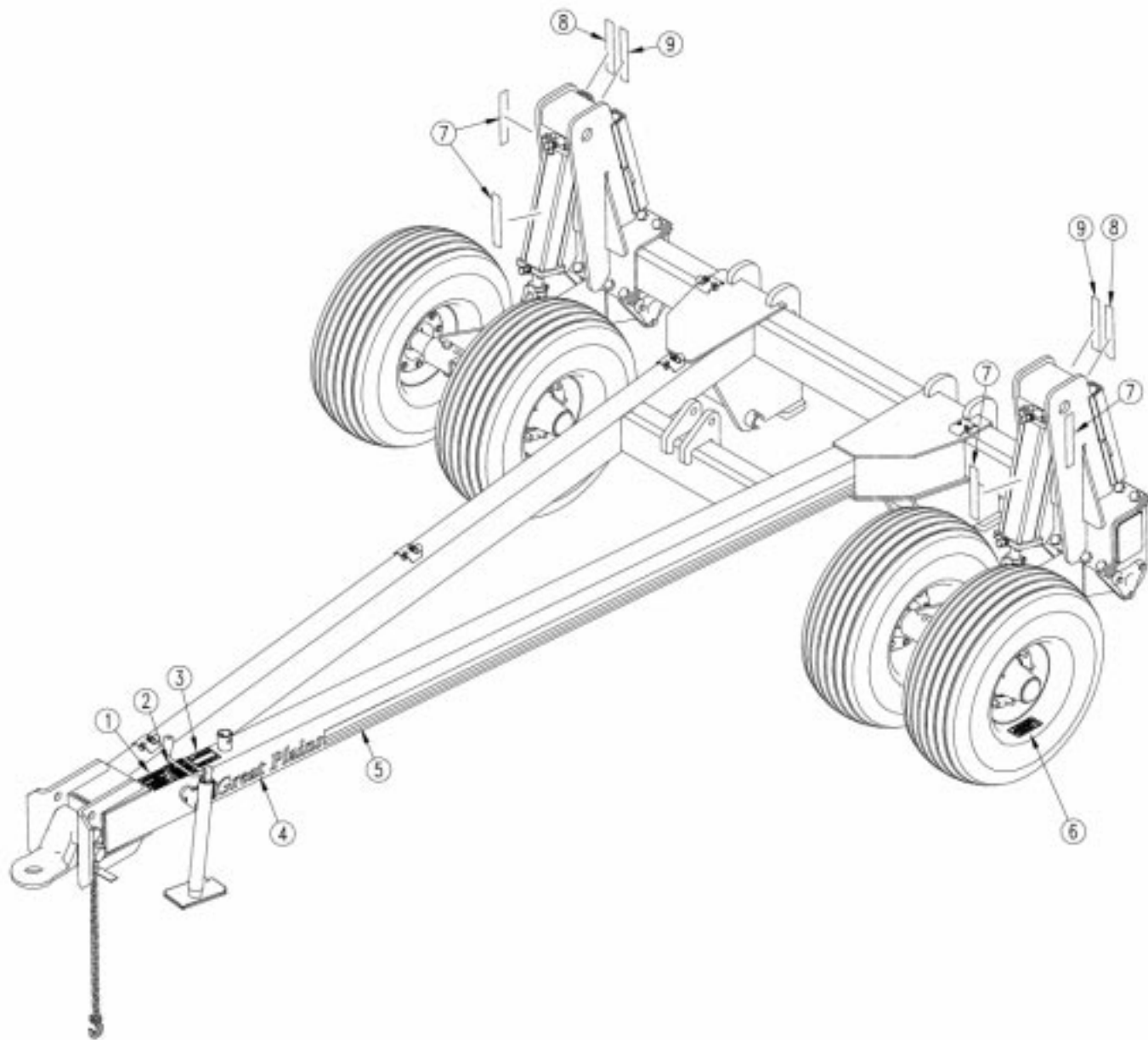
Hydraulic Cylinder (810-497C 4.75x16x1.5 Rod)

Ref.	Part No.	Part Description	Comments
1.	1M7028	MIDWAY CLEVIS	
2.	2S8522	ROD MIDWAY	
3.	3R8512	MIDWAY HEAD F/ 4 3/4 CYL	
4.	4R8108	PISTON MIDWAY	
5.	5R8124	TUBE MIDWAY	
6.	6R8171	BASE MIDWAY	
7.	7M8324	TIE ROD MIDWAY	
8.		MW WIPER	Only available in item 24
9.		U-CUP	Only available in item 24
10.		O-RING MIDWAY	Only available in item 24
11.		MW BACK UP	Only available in item 24
12.		SEAL, TEFLON MIDWAY	Only available in item 24
13.		O-RING LOADER MIDWAY	Only available in item 24
14.		WEAR RING MIDWAY	Only available in item 24
15.		MW O-RING	Only available in item 24
16.	2A0025	MW PISTON NUT	
17.	2A0019	TIE ROD NUT MIDWAY	
18.	2A0012	MW NUT CLEVIS & TIE ROD	
19.	802-023C	HHCS 3/8-16X1 3/4 GR5	
20.	2A0218	CLEVIS PIN MIDWAY	
21.	2A0215	CLEVIS PIN MIDWAY	
22.	2A0132	MW PIN CLIP	
23.	890-620C	BUSHING,1 1/2X1 1/4X3/4LG	
24.	810-160C	SEAL KIT MW 4.75 RPHCYL 4A8104	

4

Legend: ● = 1st revision; ● = 2nd revision; ● = 3rd revision; ● = use up existing stock; ⊗ = not interchangeable; ⊗ ① ● = for example: revision 2 is not interchangeable w/revision 1

Decals

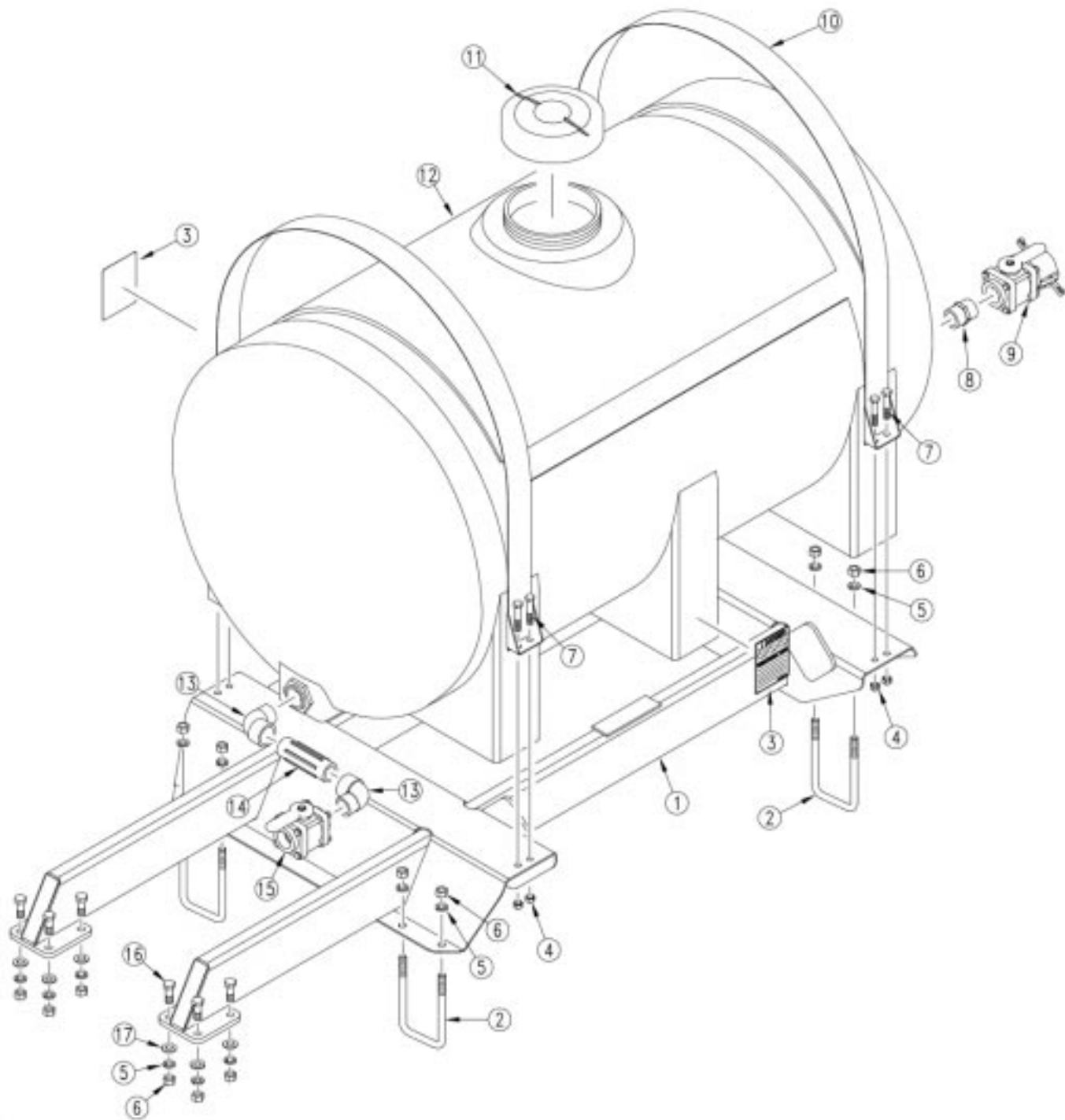


Decals

Ref.	Part No.	Part Description	Comments
1.	818-019C	DECAL WARNING NEG TONGUE WT	
2.	818-339C	DECAL WARNING HIGH PRESSUR SML	
3.	818-557C	DECAL DANGER CANNOT READ ENG	
4.	838-161C	DECAL LOGO&GP F/STRIPE 4 X 24	
5.	838-160C	DECAL 3 COLOR STRIPE 2.50 WIDE	
6.	838-259C	DECAL CAUTION TIRE 90 PSI/170	
7.	838-265C	DECAL REFLECTOR AMBER 1 1/2X9	
8.	838-266C	DECAL REFLECTOR RED 1 1/2X9	
9.	838-267C	DECAL REFLECTR DAYTIME 1 1/2X9	

Legend: ● = 1st revision; ● = 2nd revision; ● = 3rd revision; ● = use up existing stock; ⊗ = not interchangeable; ⊗ ① ● = for example: revision 2 is not interchangeable w/revision 1

Fertilizer Tank & Mount



Fertilizer Tank & Mount

Ref.	Part No.	Part Description	Comments
1.	599-010H	HITCH LIQUID FERT TANK MOUNT	
2.	806-015C	U-BOLT 5/8-11 X 4 1/32 X 8	
3.	818-323C	DECAL AG CHEMICALS DANGER	
4.	803-147C	NUT HEX NYLOCK 1/2-13	
5.	804-022C	WASHER LOCK SPRING 5/8 PLT	
6.	803-021C	NUT HEX 5/8-11 PLT	
7.	802-412C	HHCS 1/2-13X2 3/4 FTTHD	
8.	830-045C	AD 1 1/2MNPT POLYPROP	
9.	829-048C	VALVE - 1 1/2FNPT X 2FCL POLYP	
10.	599-011H	HITCH LIQUID FERT TANK STRAP	
11.	817-159C	TANK - 200 GAL PO OVAL	
12.	817-546C	TANK - 300 GAL POLY LEG	
13.	830-052C	EL 1 1/2MNPT X 1 1/2FNPT POLYP	
14.	830-135C	AD 1 1/2MNPT X 6 LONG POLYPROP	
15.	829-013C	VALVE 1 1/2FNPT BALL POLYPROP	
16.	802-053C	HHCS 5/8-11X1 3/4 GR5	
17.	804-095C	WASHER FLAT 5/8 HARD ASTM436	